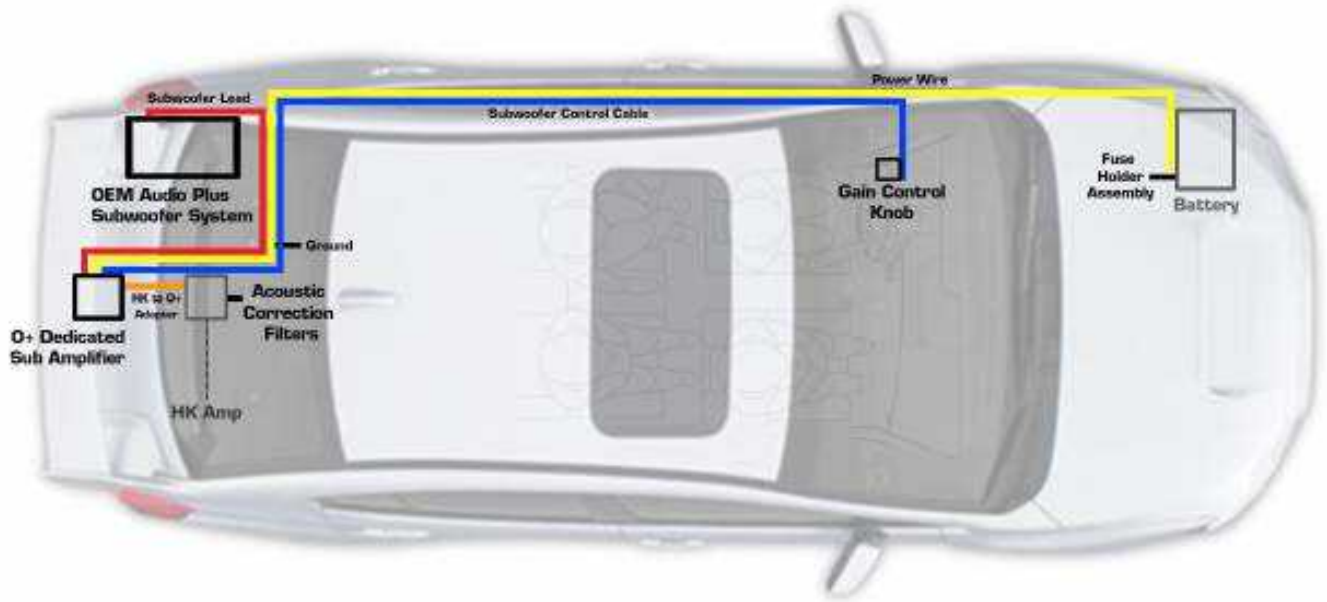


I. Overhead View of Installation



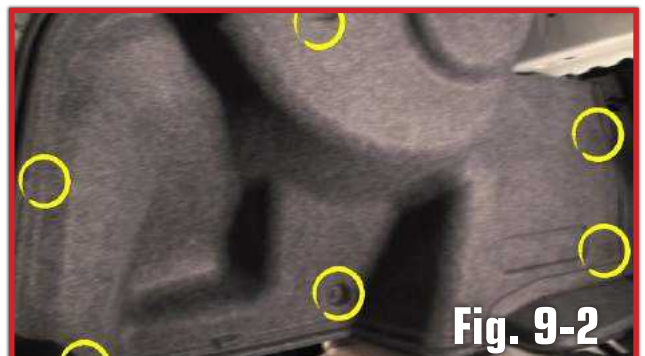
II. Subwoofer Mounting Bracket Instructions

- a. Disengage the driver side Trunk Threshold clips by prying the top cap away from its position. Once disengaged the clip can be removed by hand.

(Fig. 9-1)



- b. Disengage the six (6) clips holding the driver side trunk liner into position. Remove by prying the top cap of the clip and removing the insert of the side trunk liner clips. **(Fig. 9-2)**



c. Once loosened pull the portion of the liner from underneath the Trunk Threshold and remove the liner in it's entirety out of the vehicle. **(Fig. 9-3)**



d. Prep the Liner by cutting a 2-3" slit upward on the Side Liner from the lower most factory clip opening. **(Fig. 9-4).**



e. Rest Mounting Assembly against panel (without washer and nut) **(Fig. 9-5)**



f. Mark out cut-out for the bracket **(Fig. 9-6).**



g. Once loosened pull the portion of the liner from underneath the Trunk Threshold and remove the liner in it's entirety out of the vehicle. **(Fig. 9-7)**



h. Identify the prescribed mounting location. Fourth circular opening from the trunk floor up. **(Fig. 9-8)**



i. Install the Mounting Bracket using provided wing nut and 13mm socket or wrench to tighten. **Note:** Only the top location has mounting on the top. The bottom hole of the Mounting Bracket will line up with the factory clip location. **(Fig. 9-9)**



j. Test fit the panel for clearance. **(Fig. 9-10)**



f. Test fit the panel for clearance. **(Fig. 9-7)**

g. Re-Install Side Trunk liner and all clips associated with it's removal. You will be left with an extra clip as a result of the Mounting Bracket Installation; Store for future use if desired.

h. Reassemble trunk inserts, floor mat and cargo mat (if applicable).

i. Plug the subwoofer cable into the designated receptacle on the back of the enclosure

j. Loosen and Remove the six (6) screws securing the subwoofer into position. **(Fig. 9-8)**

k. Remove Subwoofer from enclosure. Take care not to scratch enclosure when removing.

l. Lay Subwoofer facedown in front of enclosure. The length of the Sub leads will allow speaker to rest in this position. DO NOT Disconnect wires from speaker. **(Fig. 9-9)**

m. Carefully position the Subwoofer Enclosure into position. Push into the fender cavity thus inserting the M6 Bolt of the Side Mounting Bracket into the Mounting Hole of the Enclosure. **(Fig. 9-10)**

Note: Use of a flashlight directed behind the enclosure to align the M6 Bolt and Hole may make the process easier.



Fig. 9-7



Fig. 9-8



Fig. 9-9

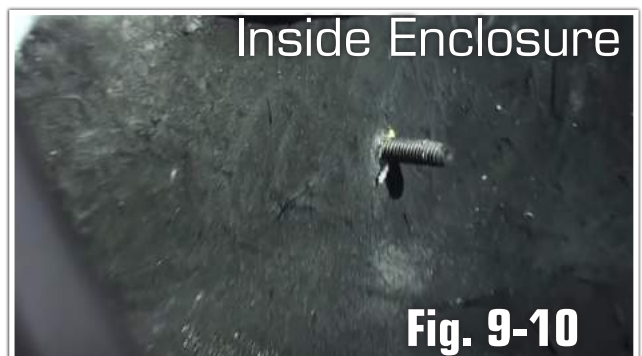


Fig. 9-10

o. Install the provided Fender Washer and 10mm Nut to the Side Mounting Bracket M6 Screw in the enclosure. **(Fig. 9-11)** Thread the nut by hand. Use wrench to tighten. Press Enclosure flush against the Trunk Liner and bracket to install completely.



p. Reposition batting in enclosure and reinstall the Subwoofer.

q. Line up subwoofer alignment holes with enclosure holes. Insert and cross-tighten screws in a star pattern. Lightly tighten – Screws should be tightened to the equivalent of two finger force – Just enough to secure the woofer in place. Take your time and Do not over-tighten. Over tightening can result in air leakage **(Fig. 9-12)**



III. Amplifier Installation

a. Remove the factory HK amp cover. The cover is attached with four (4) screws located in the bottom. When removing, use an Impact Gun or long #2 Phillips screwdriver for leverage. **(Fig. 10-1)**



b. Unclip the three (3) wire tie-downs. **(Fig. 10-2)**



c. Remove cover from vehicle.

d. With the cover removed, unplug the 10-pin and 12-pin connectors from the HK factory amplifier. **(Fig. 10-3)**



e. Plug the female OEM Audio+ 10-pin connector to the HK Amplifier **(Fig. 10-4)** then plug the female HK factory 10-pin connector to the male OEM Audio+ 10-pin connector (w/ Front Door Speaker Filter)



f. Position the O+ Amplifier Assembly and Wiring Harness as seen below prior to mounting:



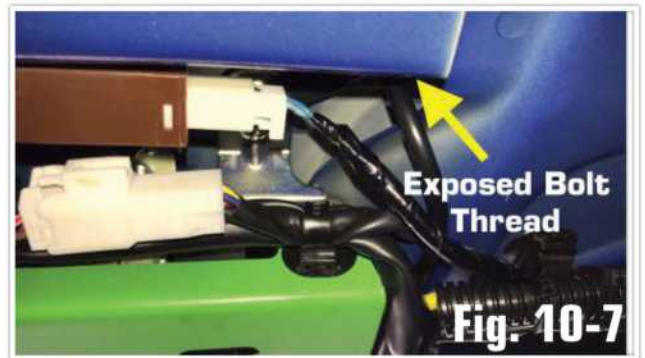
g. Install O+ Amplifier Bracket (and Harness) using Provided four (4) extended screws **(Fig. 10-5)**. Reinstall three (3) Wire-Tie Clips.



h. Plug the female HK 12-pin connector to the male 12-pin connector of the O+ Adapter Harness. Plug the O+ Adapter Harness 12-pin connector to the HK factory amplifier. **(Fig. 10-6)**



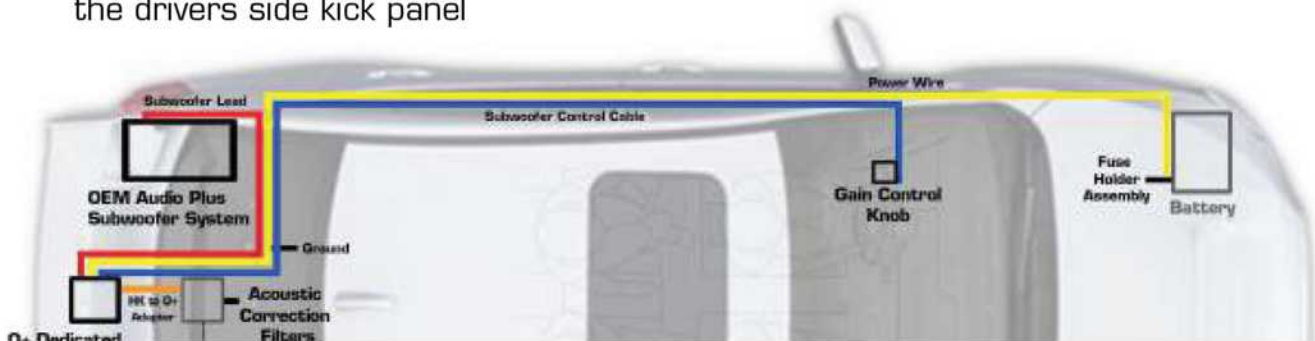
i. Using the exposed bolt nearest to the factory HK Subwoofer connector and provided M5 Nut, install the O+ Harness Ground Ring Terminal **(Fig. 10-7)**



j. Proceed running Power Wire, Gain Control Knob and Subwoofer Umbilical Cable toward the passenger side of the vehicle along factory wiring. Use wire ties as necessary. **(Fig. 10-8)**



k. Continue to run the Power Wire along the factory channels towards the drivers side kick panel



e. Remove Rear Bottom Seat Cushion.

1. From the Passengers side, locate the locking mechanism under the cushion. **(Fig. 1-2)**
2. Repeat for other side of the vehicle.

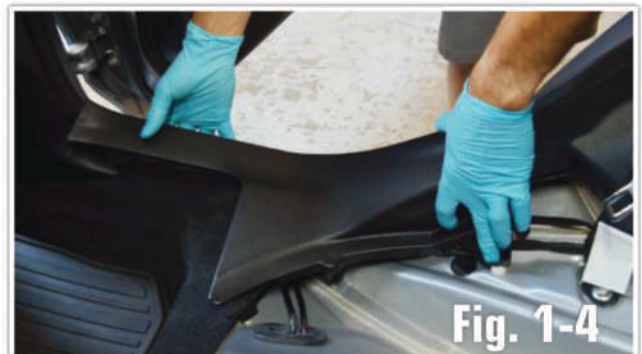


3. Pull straight up from center of cushion to disengage. **(Fig. 1-3)**

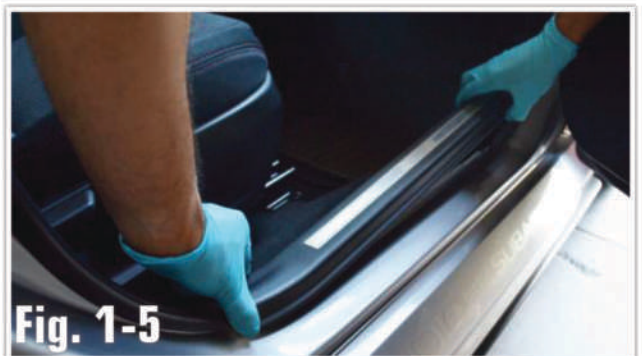


4. Remove rear seat cushion from the vehicle.

f. Disengage both ends of the rear Passenger side threshold panel by pulling straight up to remove. (Panel tool may be needed to remove the white snap). **(Fig. 1-4)**



g. Remove the front Passenger side threshold panel by pulling straight up to remove. **(Fig. 1-5)**



VIII. Power Wire Installation

Note: Remove front driver's side tire to allow access to wheel well liner and ease running of the power wire.

a. On outside of vehicle. Using a #2 Phillips screwdriver loosen the front push in snaps underneath the Drivers side side-skirt. **(Fig. 8-1)**



b. Loosen Wheel Well Liner by disengaging the three (3) locking snaps using a #2 Phillips. **(Fig. 8-2)**



c. Disengage the remaining two (2) push in snaps using a panel or pick tool. Loosening the wheel well liner will provide access to the Sun roof Drainage Cap. **(Fig. 8-3)**



d. Remove cap with panel tool or flat head screw driver.

e. Remove the Engine Compartment Drivers side fender cover by disengaging the two (2) locking snaps. **(Fig. 8-4)**



f. In the drivers side kick panel area; Run power wires directly into the light blue access panel opening towards the drivers side front wheel well. Avoid interference with accelerator and brake pedals. **(Fig. 9-5)**



g. Using your fingers or a hooked pick tool, carefully fish the power wires from within the drainage opening. Pull length of wire through opening. **(Fig. 9-6)**



h. Once the power wire installation is completed under the dash area, secure any wire slack to existing factory wiring. Use cable ties as necessary. Reinstall Drivers side Kick Panel and threshold.

i. Using a 5/16 bit or Unibit drill an opening to allow power wire to run and Sunroof Drainage cap to reinstall properly. Power wire opening can be drilled on cap just above hose location. **(Fig. 8-7)**



j. Run length of wires through backside of Cap and reinstall cap to original position. Apply a small amount of silicone sealant on the wire to seal the opening. **(Fig. 8-8)**



k. Install the 1/4" corrugated split loom onto to the power wires. **(Fig. 8-9)**



Fig. 8-9

l. Run the loomed power wires from the wheel well to the battery following the factory wiring. Secure using cable ties as necessary. **(Fig. 8-10)**



Fig. 8-10

m. Reinstall wheel well liner and corresponding locking snaps in reverse order.

n. Remove the 10mm bolt from the battery's positive terminal and install the ring terminal of the fuse holder lead. Re-install the 10mm bolt. **(Fig. 8-11)**

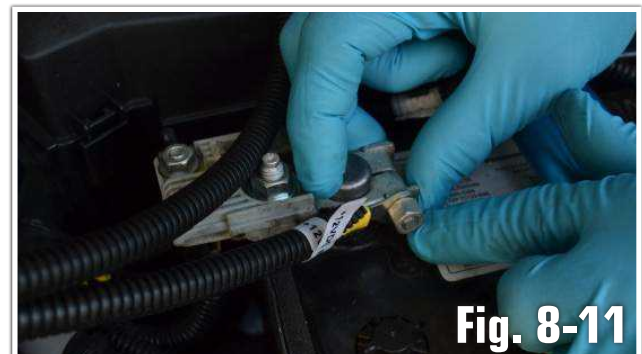


Fig. 8-11

o. Connect the power wires to the fuse holder using the pre-installed crimp-solder-seal butt connectors. These special connectors have built in solder and heat shrink. Use wire stripper and strip 3/8" off the end of each power wire. **(Fig. 8-12)**

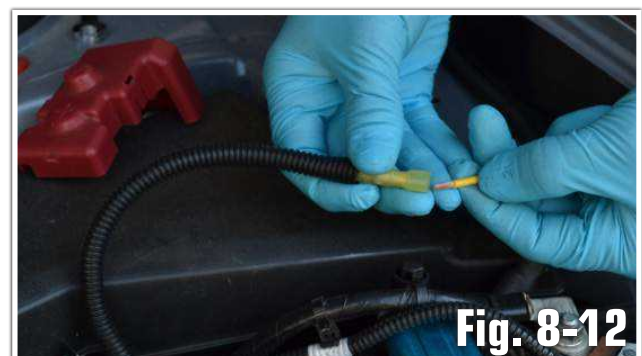


Fig. 8-12

p. Insert 12 gauge power wire and crimp. **(Fig. 8-13)**



q. Apply heat to activate the solder and heat shrink insulator for the best connection possible. Secure using cable ties as necessary. **(Fig. 8-14)**

